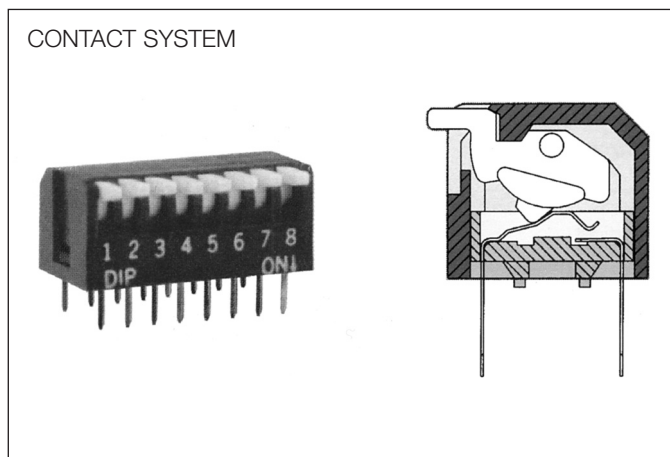
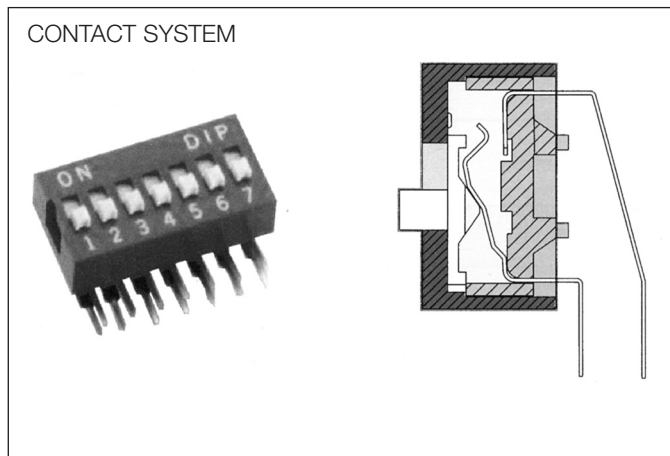
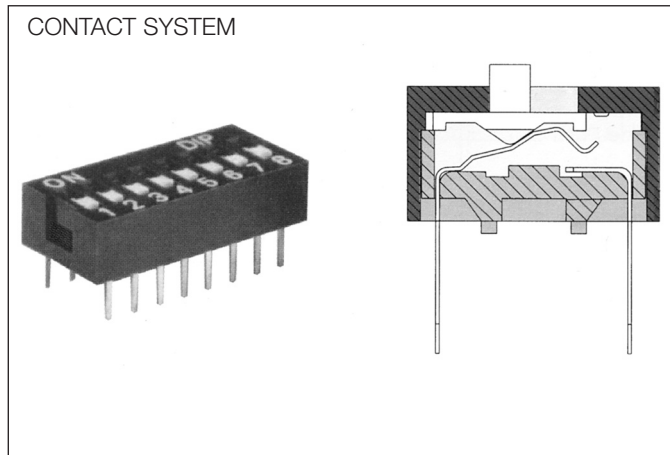
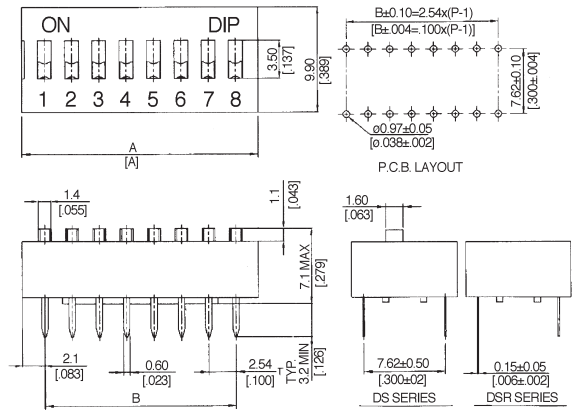


**DS(R), DA & DP(L) SERIES
SPST Standard Type**

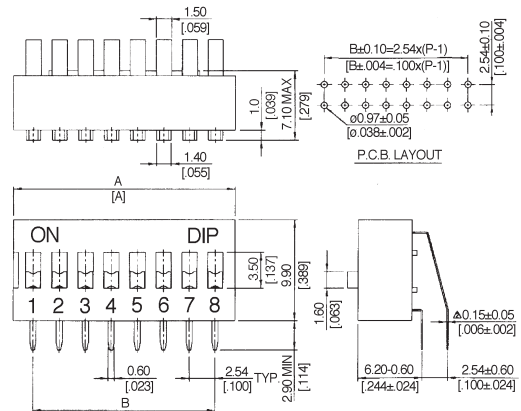


DIMENSIONS

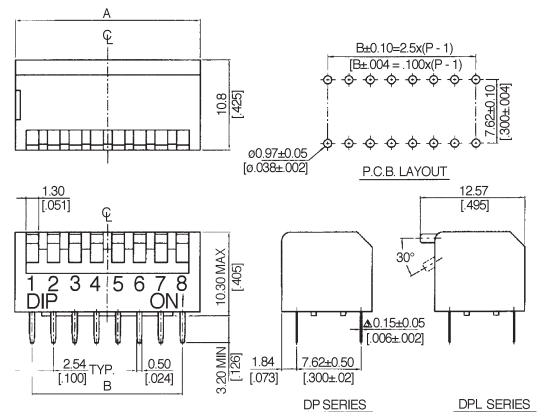
DS(R) SERIES SLIDE TYPE



DA SERIES RIGHT ANGLE TYPE



DP(L) SERIES PIANO TYPE



General Tolerance: ± 0.2 mm (± 0.008 ")

MATERIALS

- △ Base: UL94V-O PBT Thermoplastic
Color: Black.
- △ Cover: UL94V-O PBT Thermoplastic
Color: Red, Black, Blue.
- △ Actuators: UL94V-O PBT Thermoplastic
Color: White.
- △ Contact: Phosphor bronze with gold plated over nickel.
- △ Top Seal: Polyester film.

FEATURES

- △ Low contact resistance.
- △ High reliability.



SPECIFICATION

Mechanical

- Mechanical Life: 2000 operations per switch.
- Operation Force: 400 gf max. (DP series) 1000 gf max. (DS & DA series)
- Stroke: 2.0 mm
- Operation Temp: -20 °C to 70 °C
- Storage Temp: -40 °C to 85 °C
- Vibration Test: MIL-STD-202F METHOD 201A.
Frequency: 10-55-10Hz/1 min.
Directions: X, Y, Z, three mutually perpendicular directions.
Time: 2 hours each direction.
High reliability.
- Shock Test: MIL-STD-202F Method 213 B.
CONDITION A.
Gravity: 50G (peak value), 11 msec.
Direction and times: 6 sides and 3 Times in each direction.
High reliability.

Electrical

- Electrical Life: 2000 operations per switch 24VDC, 25 mA.
- Non-switching Rating: 100 mA, 50VDC.
- Switching rating: 25 mA, 24VDC.
- Contact Resistance: 50 mΩ max. at initial.
- Insulation Resistance: (at 500 VDC) 100 MΩ min.
- Dielectric Strength 500VAC/1 minute.
- Capacitance: 5 pF max.
- Circuit Single pole single throw.

SOLDERING PROCESSES

For best results, please follow these recommendations:

- ▲ Keep all switch contacts in their "OFF" position for all operations.
- ▲ Wave soldering: Recommended solder 260 °C 5 seconds.
- ▲ Hand soldering: Use a soldering iron of 30 Watts or less, controlled at 350 °C approximately 5 seconds while applying solder.
- ▲ Do not clean the switch body except top tape sealed type, which only suitable for spray cleaning method from top of the S/W.
- ▲ Make sure switch is in "OFF" position during soldering process, or it will decrease the operating force and meanwhile increase the contact resistance.

MODELS

DS-12	DA-12	DP-12	12	32.04(1.261)	31.84(1.254)
DSR-12		DPL-12			
DS-10	DA-10	DP-10	10	26.96(1.061)	26.76(1.054)
DSR-10		DPL-10			
DS-09	DA-09	DP-09	9	24.42(.961)	24.22(.954)
DSR-09		DPL-09			
DS-08	DA-08	DP-08	8	21.88(.861)	21.68(.854)
DSR-08		DPL-08			
DS-07	DA-07	DP-07	7	19.34(.761)	19.14(.754)
DSR-07		DPL-07			
DS-06	DA-06	DP-06	6	16.80(.661)	16.60(.654)
DSR-06		DPL-06			
DS-05	DA-05	DP-05	5	14.26(.561)	14.06(.554)
DSR-05		DPL-05			
DS-04	DA-04	DP-04	4	11.72(.461)	11.52(.454)
DSR-04		DPL-04			
DS-03	DA-03	DP-03	3	9.18(.361)	8.98(.354)
DSR-03		DPL-03			
DS-02	DA-02	DP-02	2	6.64(.261)	6.44(.254)
DSR-02		DPL-02			
Prod. No.		No.Of pos.		Dim.A (DP,DPL)	Dim.B (DS,DSR,DA)

Schematic (Typ.)



HOW TO ORDER

