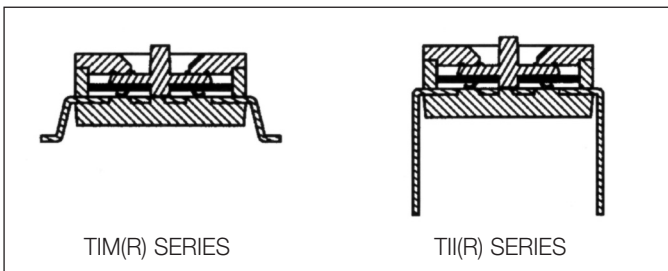


TIM(R) & TII(R) SERIES
Tri-State Low Profile Type



CONTACT SYSTEM



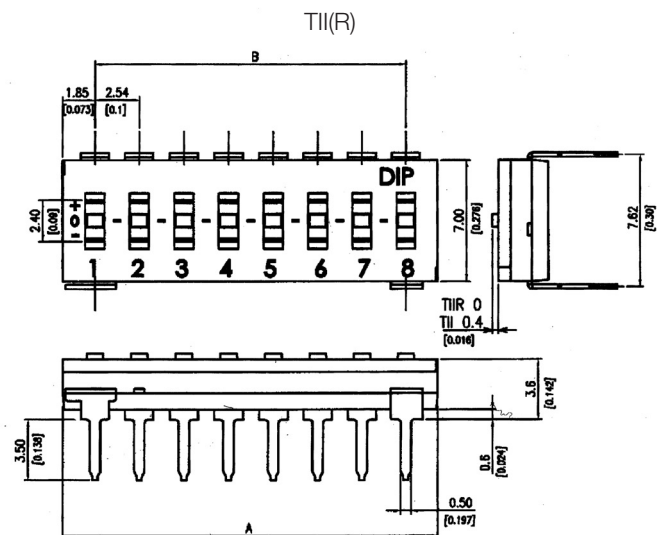
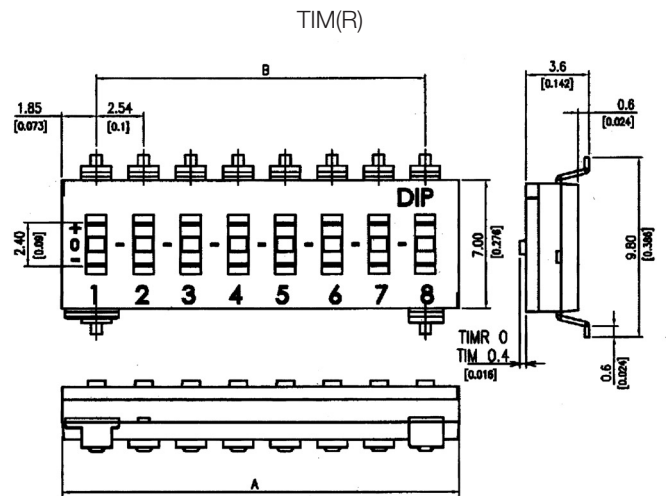
FEATURES

1. Low-profile, setting (+, 0, -) function.
2. SMT and Through hole type are available.
3. UL94V-O high-temp thermoplastic is used.
4. Top tape sealed type permits washing process.

MATERIALS

- △ Base & Cover: UL94V-O Nylon High-Temp thermoplastic.
Color: Black.
- △ Actuator: UL94V-O LCP High-Temp thermoplastic.
Color: White.
- △ Contact: Alloy Copper with gold plated.
- △ Terminal: Brass with gold plated.
- △ Tape: Kapton.

DIMENSIONS



MODELS

TIM □-10	10	26.56(1.046)	22.86(.900)
TII □-10	10	26.56(1.046)	22.86(.900)
TIM □-09	9	24.02(0.946)	20.32(.800)
TII □-09	9	24.02(0.946)	20.32(.800)
TIM □-08	8	21.48(.846)	17.78(.700)
TII □-08	8	21.48(.846)	17.78(.700)
TIM □-06	6	16.40(.646)	12.70(.500)
TII □-06	6	16.40(.646)	12.70(.500)
TIM □-04	4	11.32(.466)	7.62(.300)
TII □-04	4	11.32(.466)	7.62(.300)
Prod.No.	No. of Pos.	Dim. A	Dim. B

General Tolerance: ± 0.2 mm (± 0.008")



SPECIFICATION

Mechanical

- Mechanical Life: 2000 operations.
- Operation Force: 1000 gf max.
- Stroke: 0.8 mm.
- Operation Temp: -20 °C to 85 °C
- Storage Temp: -40 °C to 85 °C
- Vibration Test: MIL-STD-202F METHOD 201A.
Frequency: 10-55-10Hz/1 min.
Directions: X, Y, Z, three mutually perpendicular directions.
Time: 2 hours each direction.
High reliability.
- Shock Test: MIL-STD-202F METHOD 213 B.
CONDITION A.
Gravity: 50G (peak value), 11 msec.
Direction and times: 6 sides and 3 times in each direction.
High reliability.

Electrical

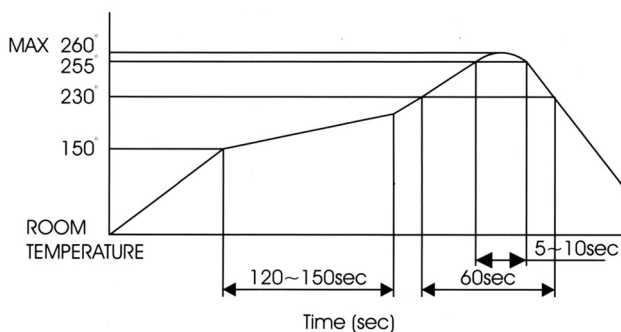
- Electrical Life: 2,000 cycles.
- Non-Switching Rating: 100mA, 50VDC.
- Rating: 25 mA, 24VDC.
- Contact Resistance: a) 50 mΩ max at initial
b) 100 mΩ max after life test.
- Insulation Resistance: 100 MΩ min. at 500 VDC.
- Dielectric Strength: 500VAC/1 minute.
- Circuit: 3 switching positions.

SOLDERING PROCESSES

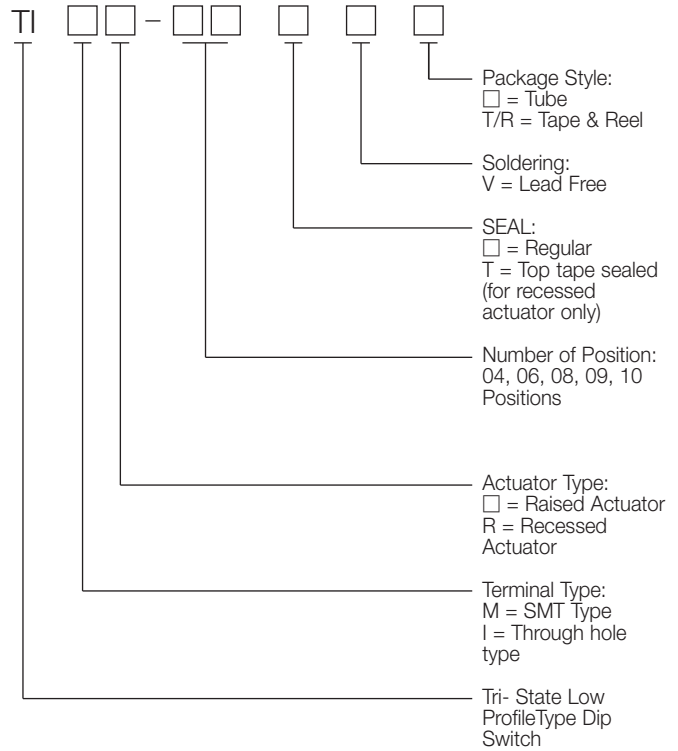
For best results, please follow these recommendations:

- △ Keep all switch contacts in their "OFF" position for all operations.
- △ Wave soldering: Recommended solder temperature at 500 °F (260 °C) max. 5 seconds for through hole type.
- △ Hand soldering: Use a soldering iron of 30 Watts, controlled at 350 °C approximately 5 seconds while applying.
- △ Reflow soldering: When applying reflow soldering, the peak temperature of the reflow oven should be set to 260 °C max.
- △ Any flux enters the switch may fail the conductivity.
- △ Do not wash the switch body except top tape sealed type, which only suitable for spray of cleaning method from top of the S/W.

Temperature profile

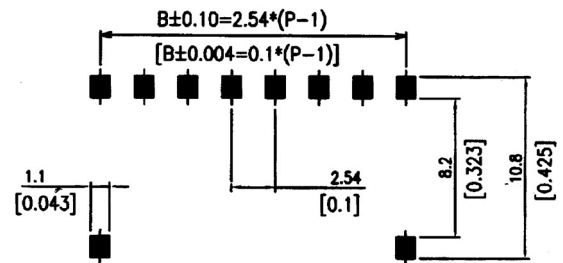


HOW TO ORDER

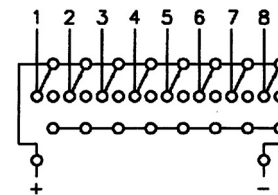
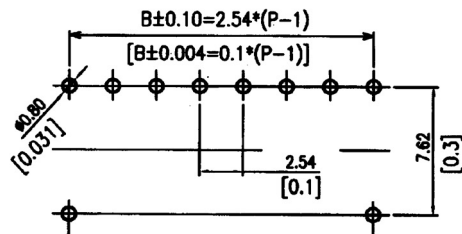


P.C.B LAYOUT

TIM(R)



TII(R)



Circuit Diagram