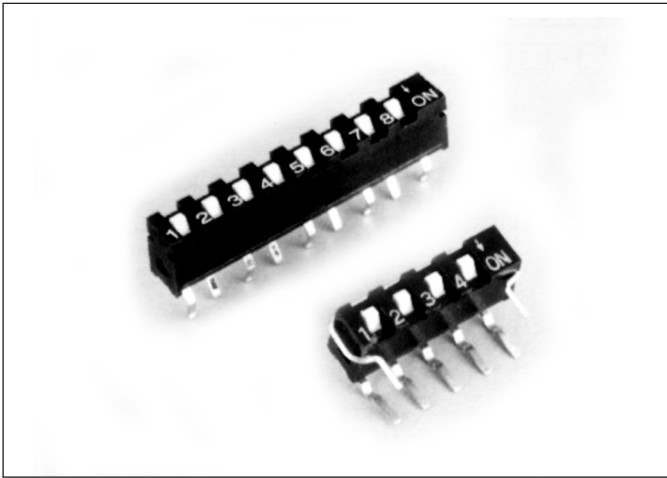
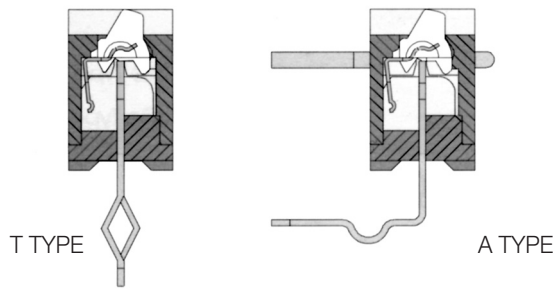


SIP SERIES
Single in Line Package Type



CONTACT SYSTEM



FEATURES

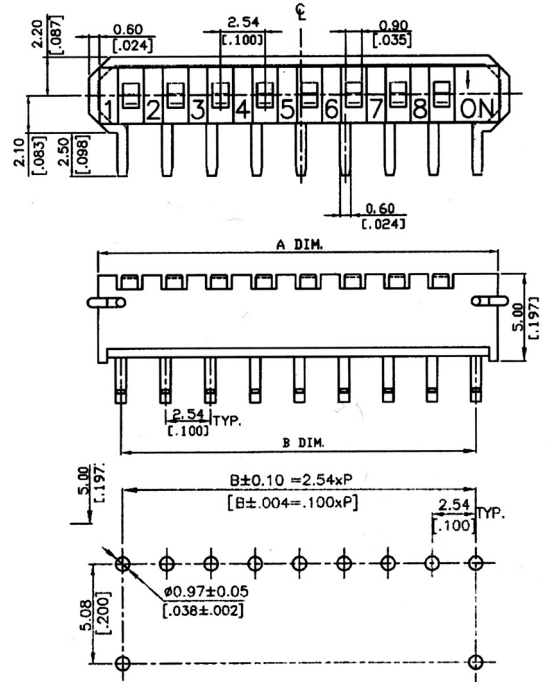
1. Splay terminals allow automatic insertion by IC insertion machine.
2. Low contact resistance.
3. High density and thinner outline to save package space.
4. High pressure contact structure to prevent vibration shock.
5. Double contacts offers high reliability.

MATERIALS

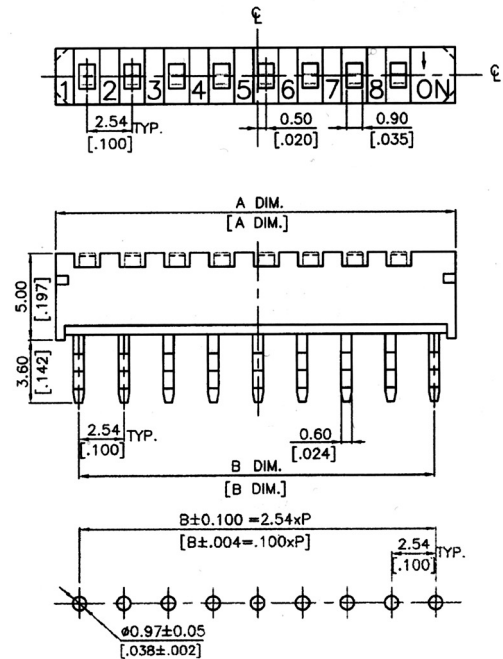
- △ Cover: UL94V-O Nylon High-Temp. Thermoplastic.
Color: Black.
- △ Base: UL94V-O PBT or Nylon High-Temp. Thermoplastic.
Color: Black.
- △ Actuator: UL94V-O Nylon Thermoplastic.
Color: White.
- △ Contact: Alloy copper with gold plated.
- △ Terminal: Brass C2680-H with tin plated.

DIMENSIONS

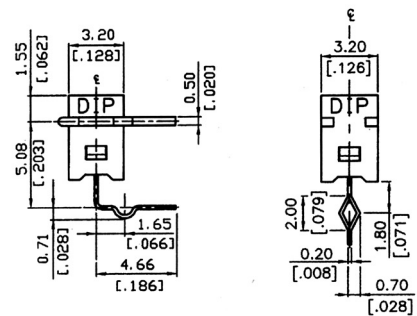
A TYPE



T TYPE



TERMINAL TYPE



General Tolerance: ± 0.2 mm (± 0.008")



SPECIFICATION

Mechanical

- Mechanical Life: 500 operations cycles.
- Operation Force: 800 gf max.
- Operation Temperature Range: -30 °C to 80 °C
- Storage Temperature Range: -30 °C to 80 °C
- Vibration Test: MIL-STD-202F METHOD 201A.
Frequency: 10-55-10Hz/1 min.
Directions: X, Y, Z, three mutually perpendicular directions.
Time: 2 hours each direction.
High reliability.
- Shock Test: MIL-STD-202F METHOD 213 B.
CONDITION A.
Gravity: 50G (peak value), 11 msec.
Direction and times: 6 sides and 3 times in each direction.
High reliability.

Electrical

- Electrical Life: 500 operations min. 5VDC, 10 mA.
- Non-Switching Rating: 100 mA, 50VDC.
- Contact Resistance: (at current 100 mA)
(a) 100 mΩ max. at initial.
(b) 200 mΩ max. after life test.
- Insulation Resistance: 100 MΩ min. at 500 VDC
- Dielectric Strength: 300VAC/1 minute.
- Capacitance: 5pF max.
- Circuit: Single pole single throw.

SOLDERING PROCESSES

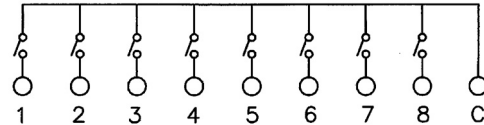
For best results, please follow these recommendations:

- △ Keep all switch contacts in their "OFF" position for all operations.
- △ Wave soldering: Recommended solder temperature at 500 °F (260 °C) max. 5 seconds (for through hole type).
- △ Hand soldering: Use a soldering iron of 30 Watts, controlled at 350 °C approximately 5 seconds while applying solder.

MODELS

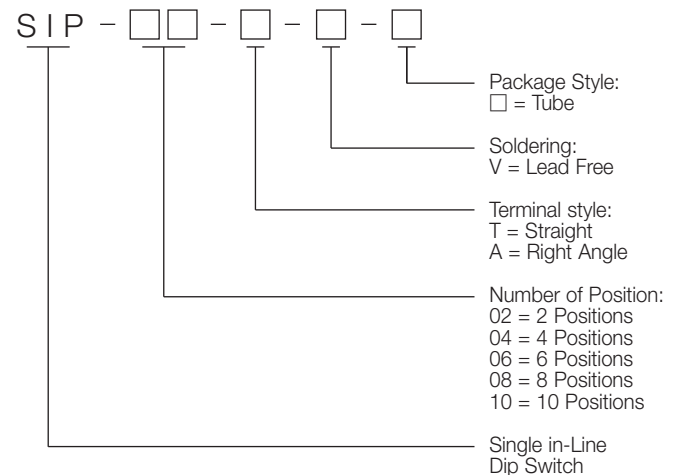
SIP-10	10	27.94(1.100)	25.40(1.000)
SIP-08	8	22.86(.900)	20.32(.800)
SIP-06	6	17.78(.700)	15.24(.600)
SIP-04	4	12.70(.500)	10.16(.400)
SIP-02	2	7.62(.300)	5.08(.200)
Prod. No.	No. of Pos.	Dim. A	Dim. B

Schematic (typ.)



Circuit Diagram

HOW TO ORDER



PACKING

SIP Type switches are shipped in "OFF" position.

PACKAGING

SIP-02A: 56 pcs/tube, SIP-02T: 62 pcs/tube
 SIP-04A: 35 pcs/tube, SIP-04T: 37 pcs/tube
 SIP-06A: 25 pcs/tube, SIP-06T: 27 pcs/tube
 SIP-08A: 20 pcs/tube, SIP-08T: 20 pcs/tube
 SIP-10A: 16 pcs/tube, SIP-10T: 17 pcs/tube