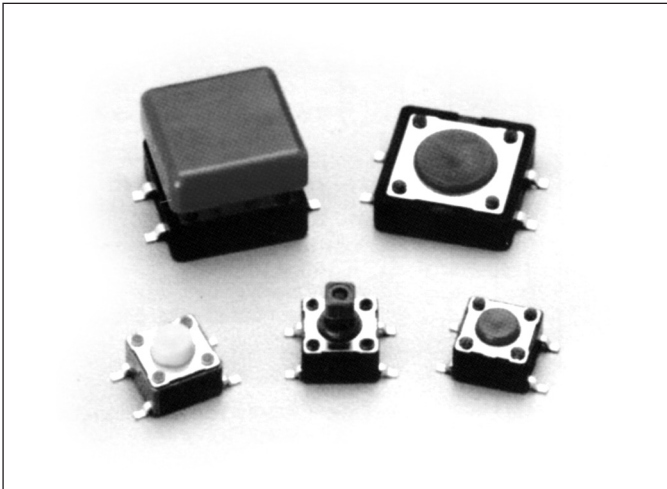


**DTSM(G)-6(2) SERIES
(SMT/Surface Mounting)**



FEATURES

1. Sharp click feel with a positive tactile feedback. Due to a small movement distance (stroke), user experiences distinct sensation when the switch "clicks" into place.
2. Ultraminiature and light weight structure suitable for high density mounting. Economic but high reliability.
3. Insert molding in the contact with special treatment prevents flux build-up during soldering and permits auto-dipping.

MATERIALS

(6x6)

- △ Cover: Stainless Steel (for DTSM-6).
Nickel Silver (for DTSMG-6).
- △ Contact Disc: Phosphor bronze with silver cladding (Standard).
Stainless Steel (V option)
- △ Terminal: Brass with silver plated.
- △ Base: UL94V-O Nylon High-Temp. Thermoplastic.
- △ STEM: UL94V-O Nylon High-Temp. Thermoplastic.
Color: Black (100gf), Brown (160gf),
Red (260gf), Salmon (320gf), Yellow (520gf).

(12x12)

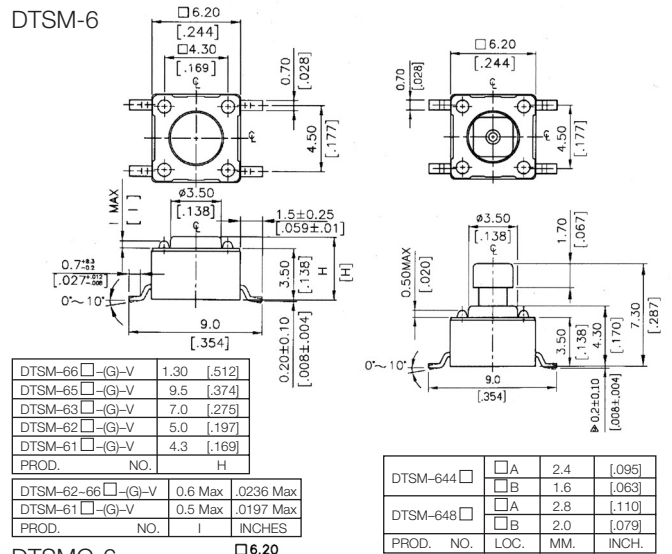
- △ Cover: Stainless Steel (for DTSM-2).
- △ Contact Disc: Phosphor bronze with silver cladding
- △ Terminal: Brass with silver plated.
- △ Base: UL94V-O Nylon High-Temp. Thermoplastic.
- △ STEM: UL94V-O Nylon High-Temp. Thermoplastic.
Color: Brown (160gf),
Red (260gf), Salmon (320gf).

PACKAGING

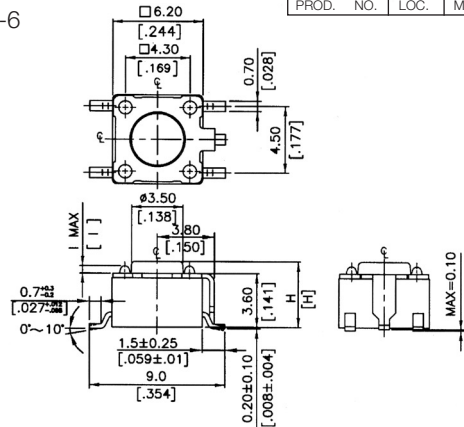
- DTSM-6: 77 pcs/tube
- DTSM(G)-61: 1000 pcs/reel
- DTSM(G)-62: 900 pcs/reel
- DTSM-63: 700 pcs/reel
- DTSM-644/648: 500 pcs/reel
- DTSM-65: 380 pcs/reel
- DTSM-2 □: 40 pcs/tube
- DTSM-21: 700 pcs/reel
- DTSM-24: 500 pcs/reel
- DTSM-25: 400 pcs/reel

DIMENSIONS

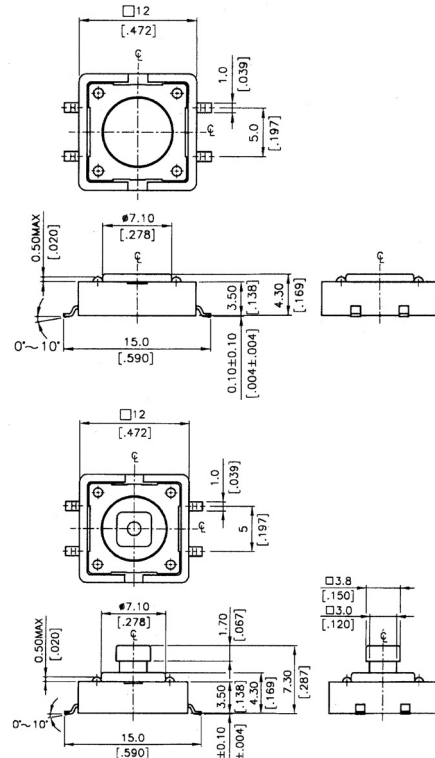
DTSM-6



DTSMG-6



DTSM-2



General Tolerance: ± 0.2 mm (± 0.008")



SPECIFICATION

Mechanical

- Operation Force: 520 ± 130gf Yellow (Y)
320 ± 80gf Salmon (S)
260 ± 50gf Red (R)
160 ± 50gf Brown (N)
100 ± 50gf Black (K)
- Stroke: (6x6) 0.25+0.2mm-0.1mm
(12x12) 0.35±0.1mm
- Operation Temperature Range: -25 °C to 70 °C
- Storage Temperature Range: -30 °C to 80 °C
- Vibration Test: MIL-STD-202F METHOD 201A.
Frequency: 10-55-10Hz/1 minute.
Directions: X, Y, Z, three mutually perpendicular directions.
Time: 2 hours each direction.
High reliability.

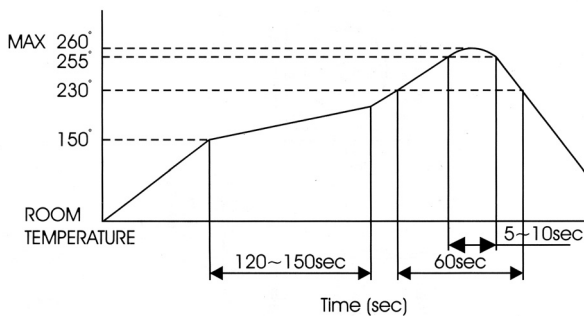
Electrical

- Electrical Life (6x6): 300,000 cycles for 320gf, 520gf.
500,000 cycles for 260gf.
1,000,000 cycles for 100gf, 160gf.
- Electrical Life (12x12): 100,000 cycles for 320gf.
100,000 cycles for 260gf.
200,000 cycles for 160gf.
- Rating: 50 mA, 12VDC.
- Contact Resistance: 100 mΩ max.
- Insulation Resistance: 100 MΩ min. at 500VDC.
- Dielectric Strength: 250VAC/1 minute.
- Contact Arrangement: 1 pole 1 throw.

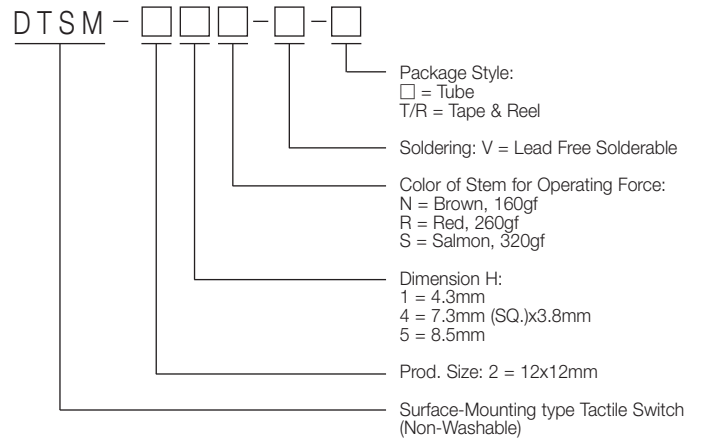
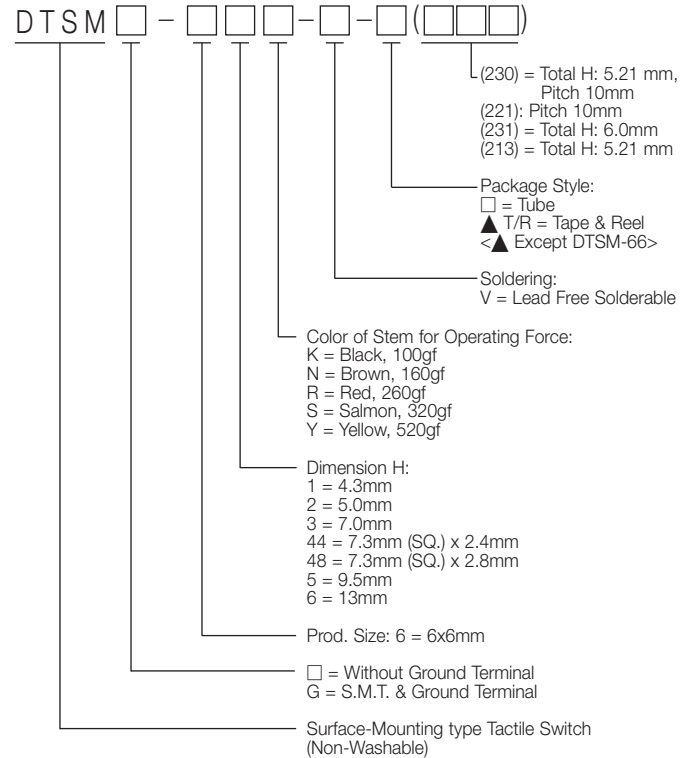
SOLDERING PROCESSES

- △ Hand soldering: Use a soldering iron of 30 watts, controlled at 350 °C approximately 5 seconds while applying solder.
- △ Reflow soldering: When applying reflow Soldering, the peak temperature or the reflow oven should be set to 260 °C max.

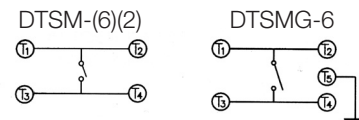
Temperature profile:



HOW TO ORDER



CIRCUIT



P.C.B. LAYOUT

