

**DTSGZM-6, DTSZM-6 & DTSYH-6 SERIES
(With Ground Terminal Option)**



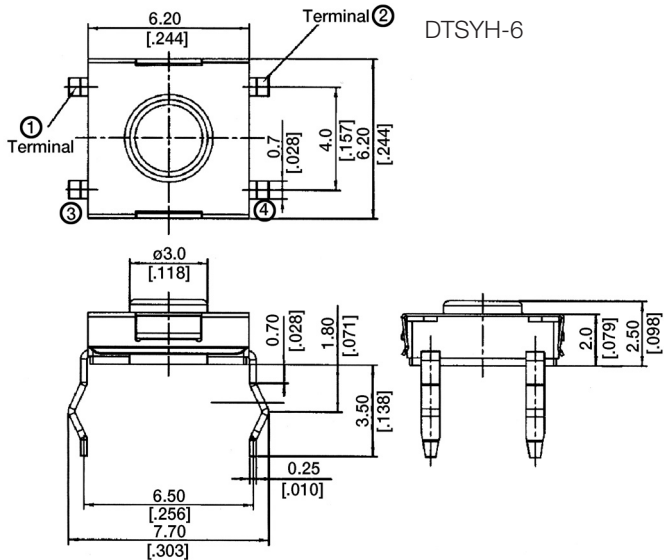
FEATURES

1. Sharp click feel with a positive tactile feedback. Due to a small movement distance (stroke), user experiences distinct sensation when the switch “clicks” into place.
2. Ultraminiature and light weight structure suitable for high density mounting. Economic but high reliability.
3. Insert molding in the contact with special treatment prevents flux build-up during soldering and permits auto-dipping.

MATERIALS

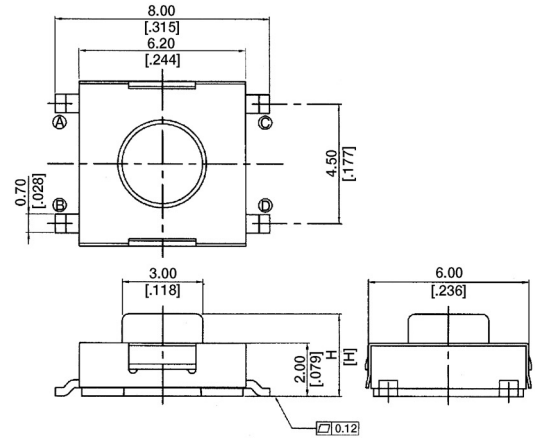
- △ Cover: Stainless Steel (DTSYH-6, DTSZM-6)
Nickel Silver (DTSGZM-6).
- △ Contact Disc: Stainless with silver cladding.
- △ Terminal: Brass with silver plated.
- △ Base: UL94V-O High-Temp Thermoplastic.
Color: Black.
- △ STEM: UL94V-O Nylon High-Temp Thermoplastic.
Color: Black (100gf), Red (260gf), Brown (160gf).

DIMENSIONS

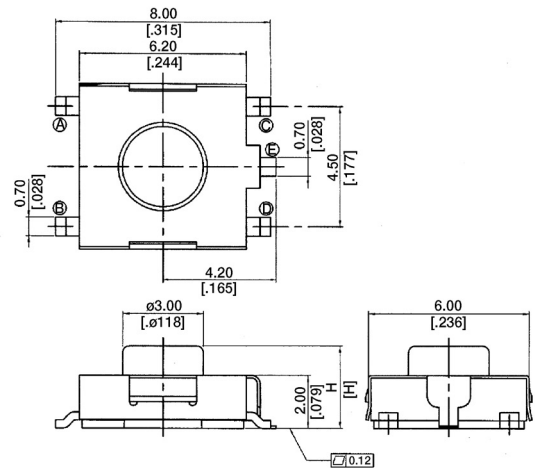


DIMENSIONS

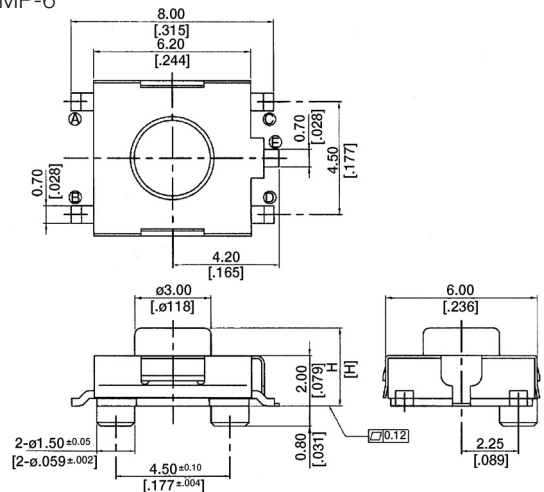
DTSZM-6



DTSGZM-6



DTSGZMP-6



General Tolerance: ± 0.2 mm (± 0.008")



SPECIFICATION

Mechanical

- Operation Force: 100 ± 50gf Black (K)
160 ± 50gf Brown (N)
260 ± 50gf Red (R)
- Stroke: 0.25+0.2/-0.1 mm
- Operation Temperature Range: -25 °C to +70 °C
- Storage Temperature Range: -30 °C to +80 °C
- Vibration Test: MIL-STD-202F METHOD 201A.
Frequency: 10-55-10Hz/1 minute.
Directions: X, Y, Z, three mutually perpendicular directions.
Time: 2 hours each direction.
High reliability.
- Shock Test: MIL-STD-202F METHOD 213 B.
CONDITION A.
Gravity: 50G (peak value), 11 msec.
Direction and times: 6 sides and 3 times in each direction.
High reliability.

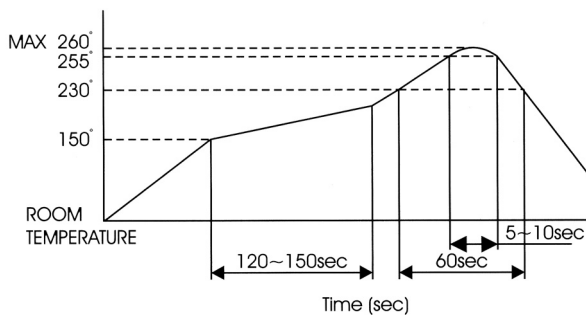
Electrical

- Electrical Life: 100,000 cycles for 260gf.
200,000 cycles for 100gf, 160gf.
- Rating: 50 mA, 12VDC.
- Contact Resistance: 100 mΩ max.
- Insulation Resistance: 100 MΩ min. at 500VDC.
- Dielectric Strength: 250VAC/1 minute.
- Contact Arrangement: 1 pole 1 throw.

SOLDERING PROCESSES

- △ Hand soldering: Use a soldering iron of 30 watts, controlled at 350 °C approximately 5 seconds while applying solder.
- △ Reflow soldering: When applying reflow soldering, the peak temperature or the reflow oven should be set to 260 °C max.

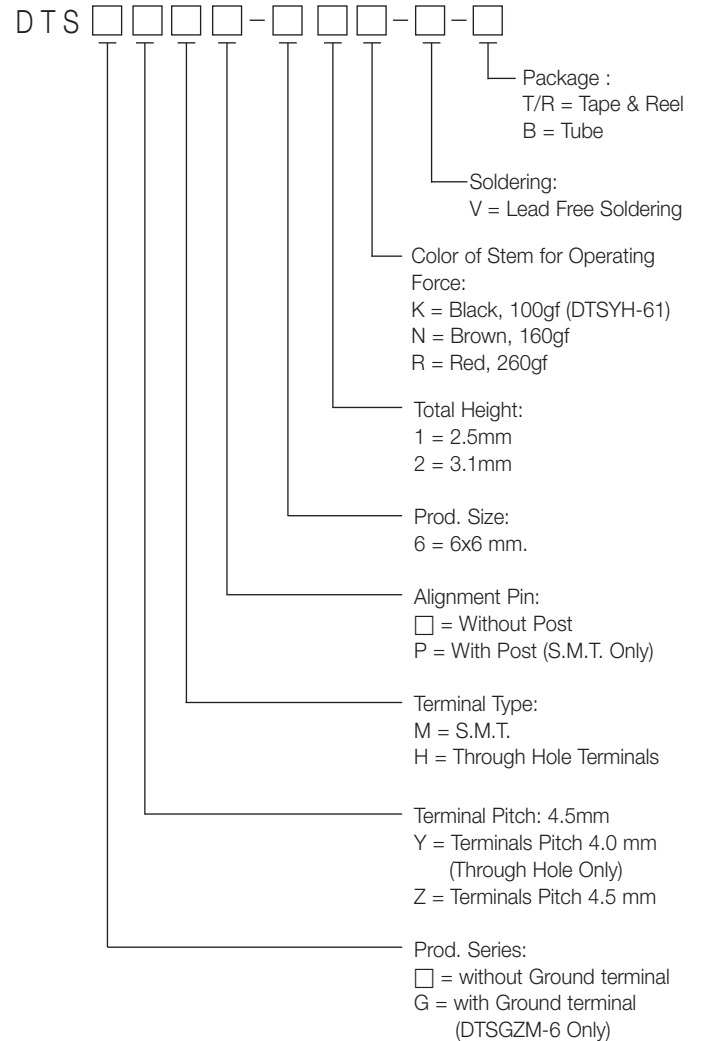
Temperature Profile:



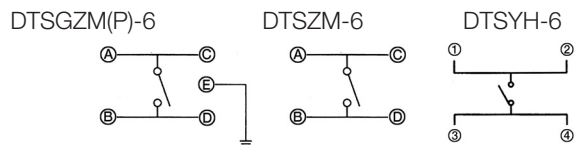
PACKAGING

- Tube = 75pcs/tube
- DTS(G)ZM-61 □ -T/R: 2500 pcs/reel
- DTS(G)ZM-62 □ -T/R: 2500 pcs/reel

HOW TO ORDER



CIRCUIT



P.C.B. LAYOUT

