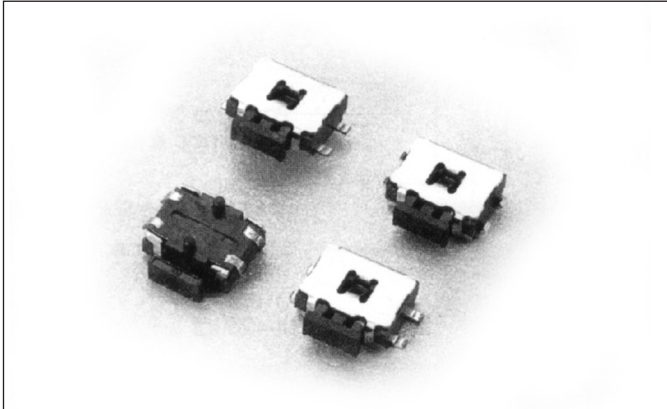


**PT(C)L, PT(C)F SERIES**  
(Side push, Vertical push)



**FEATURES**

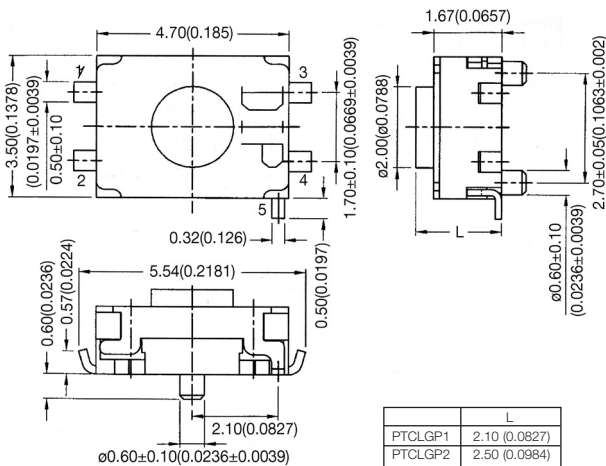
1. Sharp click feel with a positive tactile feedback.  
Due to a small movement distance (stroke), user experiences distinct sensation when the switch clicks into place.
2. Ultraminiature and light weight structure suitable for high density mounting. Economic but high reliability.
3. Insert molding in the contact with special treatment prevents flux build-up during soldering and permits auto-dipping.

**MATERIALS**

- △ Cover: Stainless steel.
- △ Contact Disc: Stainless steel.
- △ Terminal: Brass with silver plated.
- △ Base: LCP High-temp. Thermoplastic.  
Color: Black.
- △ STEM: LCP high-temp. Thermoplastic.  
Color: Black.
- △ Tape: Teflon.

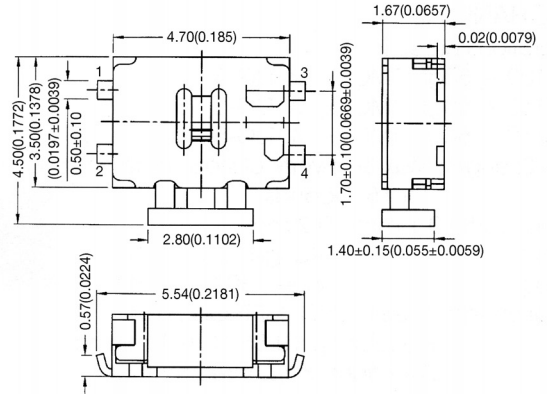
**DIMENSIONS**

PTCLGP

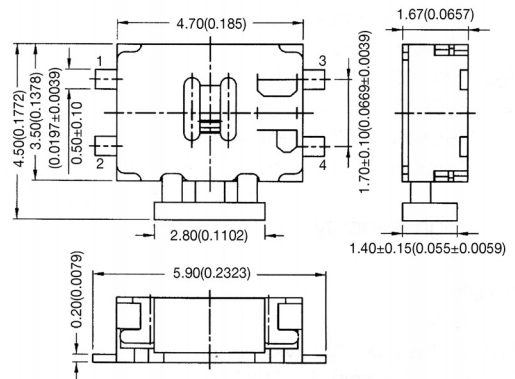


**DIMENSIONS**

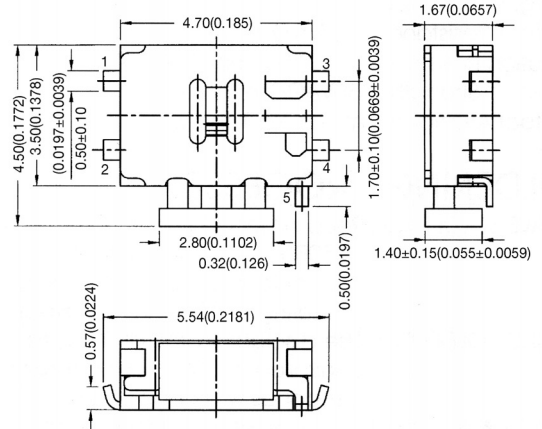
PTL



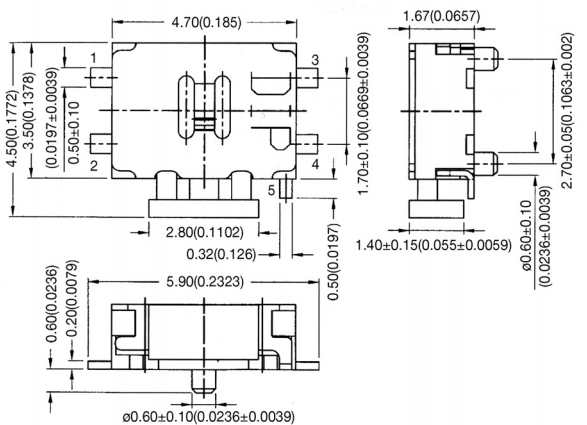
PTF



PTLG



PTCFG



General Tolerance: ± 0.2 mm (± 0.008")



## SPECIFICATION

### Mechanical

- Operation Force:
  - 220 + 80gf Side push
  - 70gf
  - 160 ± 50gf Vertical push
- Stroke: 0.30 + 0.1mm Side push
- 0.15mm
- 0.20 ± 0.1mm Vertical push
- Operation Temperature Range: -25 °C to 70 °C
- Storage Temperature Range: -30 °C to 80 °C
- Vibration Test: MIL-STD-202F METHOD 201A.  
Frequency: 10-55-10Hz/1 minute.  
Directions: X, Y, Z, three mutually perpendicular directions.  
Time: 2 hours each direction.  
High reliability.
- Shock Test: MIL-STD-202F METHOD 213 B.  
CONDITION A.  
Gravity: 50G (peak value), 11 msec.  
Direction and times: 6 sides and 3 times in each direction.  
High reliability.

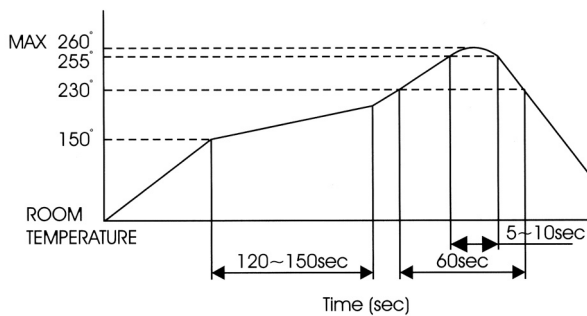
### Electrical

- Electrical Life: 100,000 cycles min. for PT(C)L, PT(C)F
- Rating: 50 mA, 12VDC.
- Contact Resistance: 100 mΩ max.
- Insulation Resistance: 100 MΩ min. 500VDC.
- Dielectric Strength: 250VAC/1 minute.
- Contact Arrangement: 1 pole 1 throw.

## SOLDERING PROCESSES

- ▲ Hand soldering: Use a soldering iron of 30 watts, controlled at 350 °C approximately 5 seconds while applying solder.
- ▲ Soldering: Vapor phase & IR-reflow soldering can be applied.

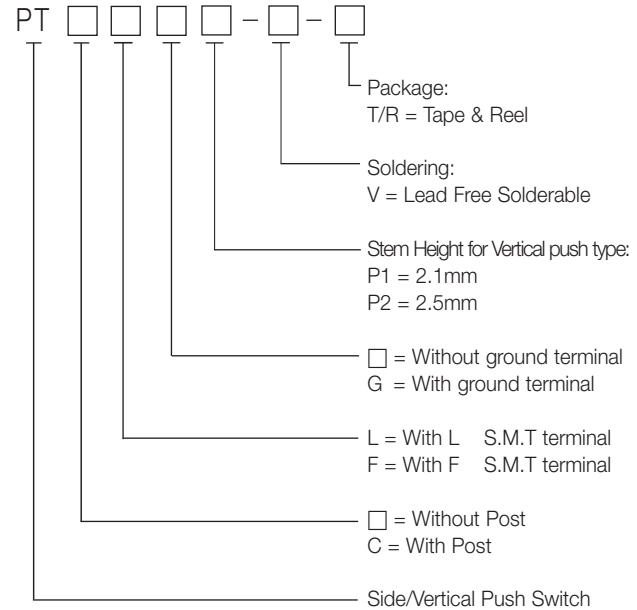
### Temperature Profile:



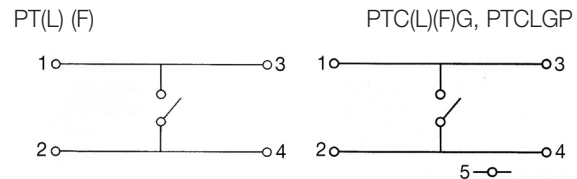
## PACKAGING

Side push type: 3000 pcs/reel  
Vertical push type: 2400 pcs/reel

## HOW TO ORDER



## CIRCUIT



## P.C.B. LAYOUT

